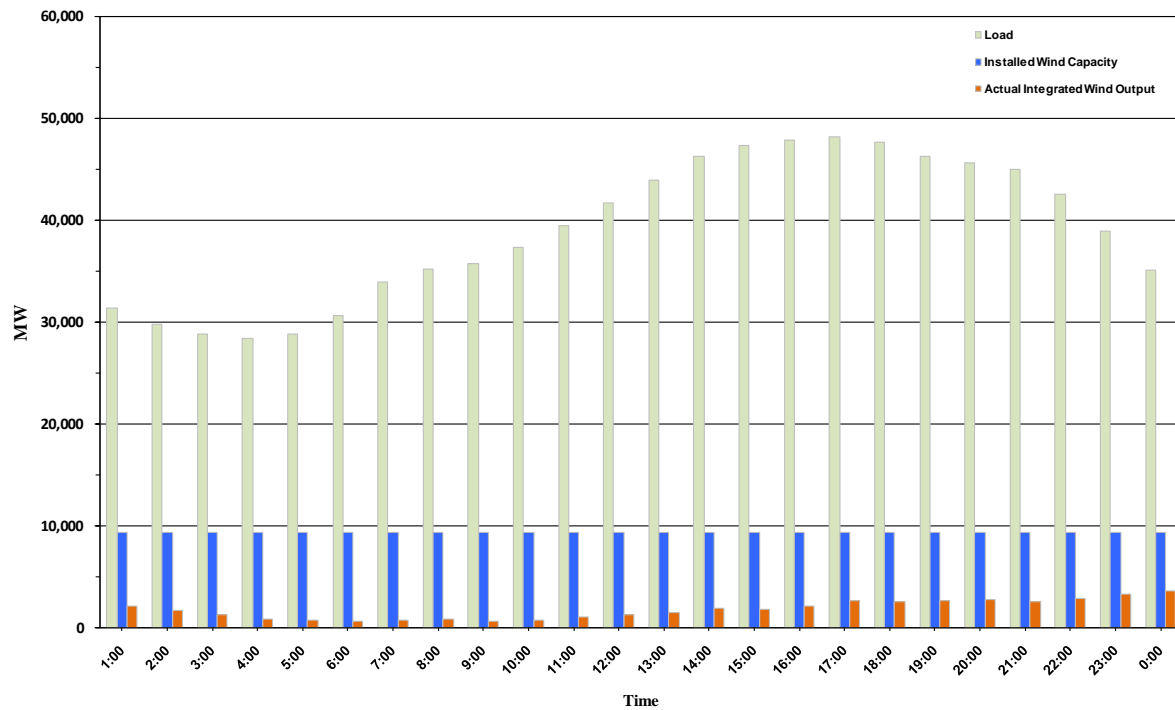




## ERCOT Grid Operations Wind Penetration Report: 09/20/10

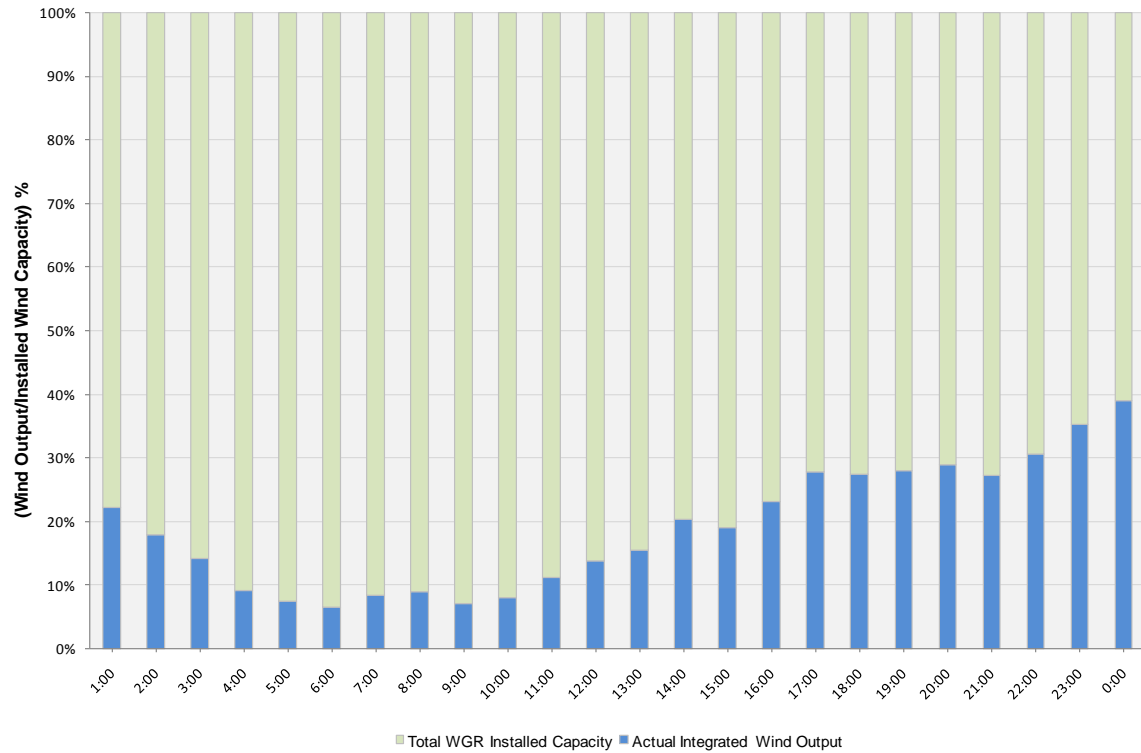
Peak Load	<b>48,219 MW</b>
Load Peak Hour	<b>17</b>
Wind Record 06/12/10	<b>7016 MW</b>
Max Wind value	<b>3756 MW</b>
Wind Peak Hour	<b>23:32:04</b>
Wind Penetration %	<b>10.72</b>

Hourly Average Actual Load vs. Actual Wind Output  
09-20-2010

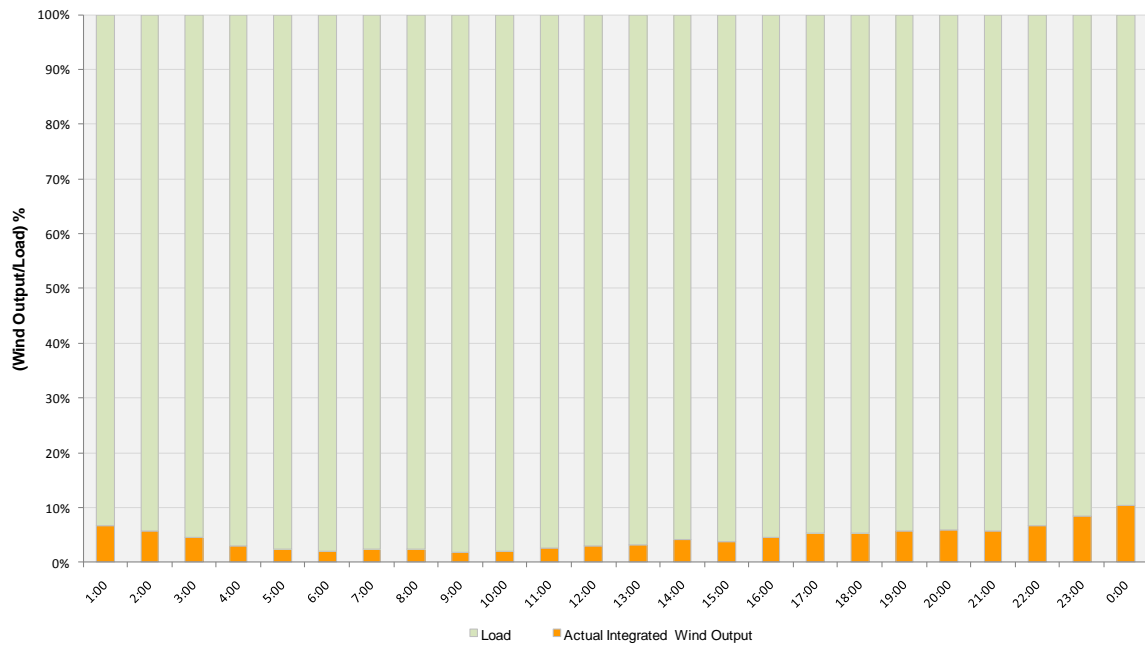




**Actual Wind Output as a Percentage of the Total Installed Wind Capacity**  
**09-20-2010**



**Actual Wind Output as a Percentage of the ERCOT Load**  
**09-20-2010**





## ERCOT Load vs. Actual Wind Output 09/13/10 - 09/20/10

